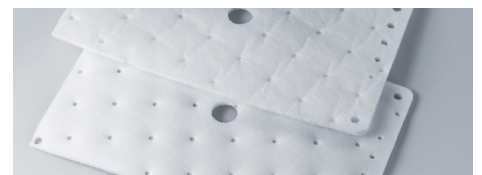


Automotive filters

Automotive filters are designed to protect relevant mechanical and electronic components parts in the automotive sector. Sefar offers highly precise woven screens in monofilaments for applications such as security filters for valves, pumps and sensors. We can also supply depth filters where high dust holding capacity is needed.

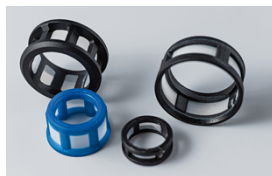


Product Features

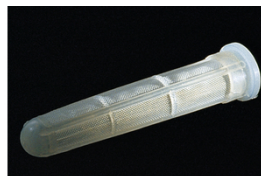
Injection Filter



Hydraulic Filter



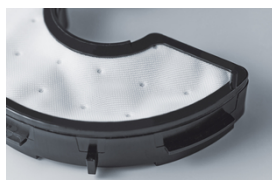
Water Filter



In-tank Filter



AdBlue Filter



Gear Filter



Diesel Filter



DOWNLOADS

Brochure: Automotive (PDF 3464 kb)

Customer Info: SEFAR PEEKTEX
Automotive (PDF 763 kb)

Flyer: SEFAR PowerHeat NT (PDF 231 kb)

Flyer: SEFAR VISION AM (PDF 992 kb)

Injection filters

Sefar Inc.

Los Angeles, CA – USA

Phone 800 995 0531
Fax +1 909 544 5901

sales.us@sefar.com

[Go to product page](#)

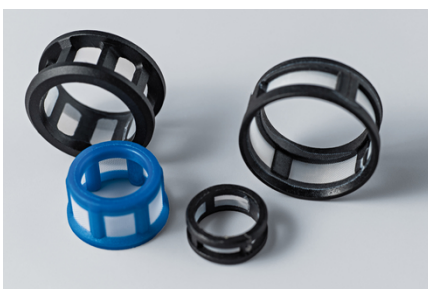
For fuel, CNG and AdBlue / SCR filters



- Highly precise and secure filter screens in a wide range of pore sizes
- Excellent thermal and chemical resistance
- Best possible flow rate
- Customer-specific colors
- Best processability
- SEFAR NITEX (PA), SEFAR PEEKTEX (PEEK) screens

Filters for hydraulic systems

For hydraulic brake filters, transmission filters, power steering filters and hydraulic cartridge systems:



- Highly precise and secure filter screens in a wide range of pore sizes
- Excellent thermal and chemical resistance
- Best possible flow rate
- SEFAR NITEX (PA), SEFAR PETEX (PET) and SEFAR PEEKTEX

Sefar Inc.

Los Angeles, CA – USA

Phone 800 995 0531
Fax +1 909 544 5901

sales.us@sefar.com

[Go to product page](#)

- (PEEK) screens
- Customer-specific colors in PA and PET
- Best processability

Filters for the water system

We provide products for windshield wipers and water reservoirs:



- Highly precise and secure filter screens in a wide range of pore size
- Excellent thermal and chemical resistance
- Best possible flow rate
- SEFAR NITEX (PA), SEFAR PROPYLTEX (PP) screens
- Customer-specific colors in PA
- Best processability

In-tank fuel pump filter and in-tank diesel filter

Sefar Inc.

Los Angeles, CA – USA

Phone 800 995 0531
 Fax +1 909 544 5901

sales.us@sefar.com

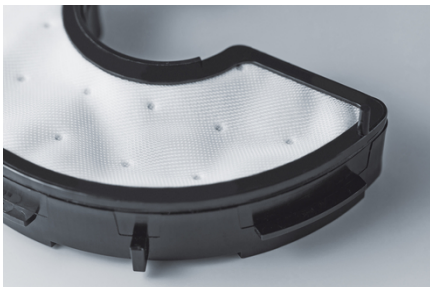
[Go to product page](#)



- High mechanical and chemical stability
- High capacity on defined particle size
- Best processability
- SEFAR ACCUFLOW, SEFAR TETEX
MONO, SEFAR NITEX

AdBlue / SCR / DEF- Filters and sensor filters

Products to protect the AdBlue pump module, injection system and sensors in diesel exhaust conditioning.



- High mechanical and chemical stability
- High capacity on defined particle size
- Best processability
- SEFAR ACCUFLOW, SEFAR TETEX
MONO, SEFAR NITEX

Transmission, gear oil filtration

Sefar Inc.

Los Angeles, CA – USA

Phone 800 995 0531
Fax +1 909 544 5901

sales.us@sefar.com

[Go to product page](#)

Suction and pressure filters manufactured using our open mesh fabrics combined with a wide range of depth media provide the ultimate filtration protection.



- Customer-specific solutions
- Combination of non-woven and woven fabric
- Open mesh for pleated elements
- Open mesh for last chance filtration

Diesel water separation

SEFAR ACCUFLOW is the top choice for coalescing, while an open mesh filter with a special hydrophobic treatment is best for water separation.



- SEFAR ACCUFLOW depth media for coalescing
- SEFAR PETEX (PET), SEFAR NITEX (PA) hydrophobic range for water separation
- In-house media testing (based on ISO 16332)



IATF 16949 Automotive

Sefar's manufacturing system is geared towards providing lot-to-lot repeatability for critical parameters. This consistent quality allows automotive injection molders and filter element manufacturers to easily incorporate Sefar products into their manufacturing processes.

Your Benefits

Inherent material properties

- Good replacement for metal filters (thermal and chemical resistance)
- Easily molded (handling properties of synthetic fiber vs. wire)
- Consistent quality (IATF 16949)
- Useable in extreme temperature ranges and chemically aggressive environments (PEEK fabrics)
- Variety of conversion configurations

Open mesh fabrics

- Exact and repeatable screening properties (high precision mesh opening)
- High flow rates (low pressure drop, maximized open area by use of fiber down to 24µm)

Sefar Inc.

Los Angeles, CA – USA

Phone 800 995 0531
 Fax +1 909 544 5901

sales.us@sefar.com

[Go to product page](#)

-
- Adjustable hydrophobic levels, ranging from 100 to 135 degree contact angle
(surface modification)
 - Maximum technical range (materials, diameters and weaving patterns)
-

Closed mesh fabrics

- Highly efficient particle retention (closed mesh)
 - Optimized flow rates
 - Cleanliness (smooth surface)
-

Depth filter material

- Lower power consumption and minimal space requirement (low pressure drop)
- Protects pump systems (high particle retention capacity)
- Useable with all fuels and most liquids (elevated temperature fuel tests)
- Excellent bonding uniformity (latest ultrasonic bonding technology)
- Depth filter material for high capacity (60 µm material) applications
- Depth filter material for high efficiency (30 µm material) applications
- Proven test results for flat or converted materials (external approved test labs)
- Available as roll goods or ribbons for injection molders

Locations

Sefar Inc.

Los Angeles, CA – USA

Phone 800 995 0531
Fax +1 909 544 5901

sales.us@sefar.com

[Go to product page](#)



Sefar BDH Inc.

200 rue Clement Gilbert
Saguenay QC, G7H 5B1 – Canada
Phone: +1 418 690 0888
Fax: +1 418 690 9499

 [E-Mail](#)



Sefar Inc.

Kansas City, MO – USA
Phone: 800 995 0531
Fax: +1 816 452 2183

 [E-Mail](#)



Sefar Inc.

Los Angeles, CA – USA
Phone: 800 995 0531
Fax: +1 909 544 5901

 [E-Mail](#)



Sefar Inc.

Gray, GA – USA
Phone: 800 995 0531
Fax: +1 478 986 6953

 [E-Mail](#)



Sefar Inc.

111 Calumet Street
Buffalo, NY 14043 – USA
Phone: 800 995 0531
Fax:

 [E-Mail](#)

Sefar Inc.

Los Angeles, CA – USA

Phone 800 995 0531
Fax +1 909 544 5901

sales.us@sefar.com

[Go to product page](#)